



SIGNATURE HOMES  
— RESIDENTIAL LEASING —



## 127 Repulse Bay Road

127 Repulse Bay Road, Repulse Bay, Island South, Hong Kong

Exclusive single block residence located on Repulse Bay Road with spectacular views, it stands close to shopping arcade and recreational facilities of Repulse Bay and Stanley.

- ◆ 4-bedroom apartments include two ensuites, a walk-in closet and panoramic sea view in the master bedroom, and equipped kitchen with a breakfast area
- ◆ All units and bedrooms feature impressive floor-to-ceiling windows capturing the picture-perfect views of the tranquil sea and beach

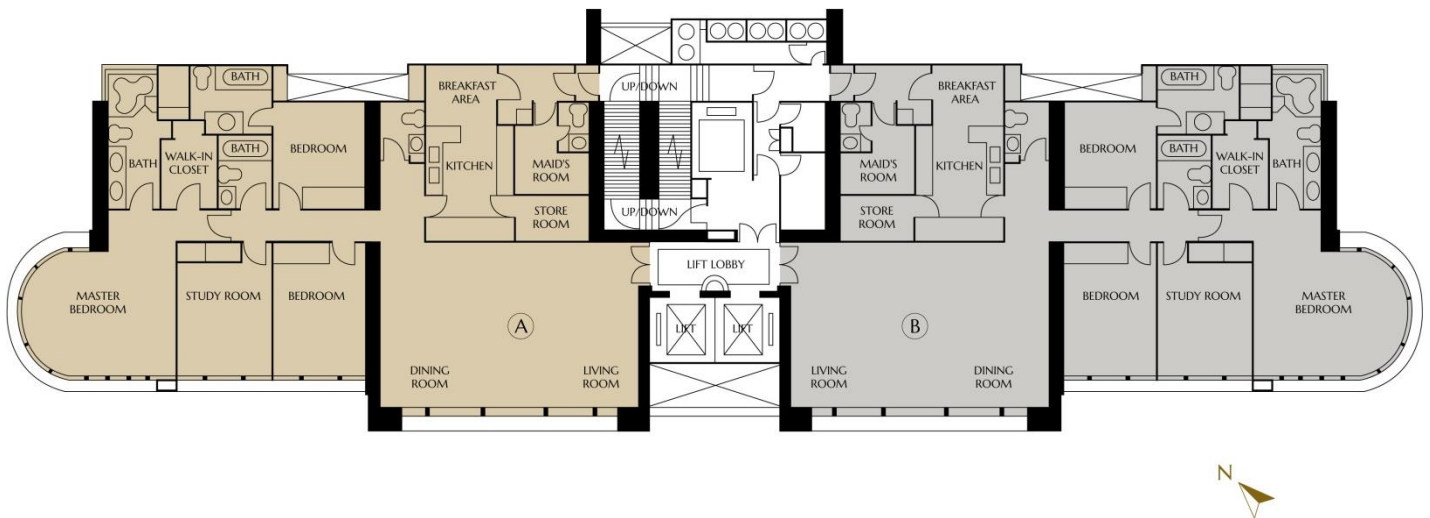


## FEATURES

- ◆ Comprehensive clubhouse with gymnasium, children's playground, landscaped gardens, outdoor swimming pool, jacuzzi, tennis court, barbeque site, and more
- ◆ Stone's throw away from the beautiful Repulse Bay Beach, country parks, golf & yacht clubs, and international schools
- ◆ Prestigious south side location yet only 20-minute drive to Central



## FLOOR PLAN



Gross Area: 2,990 sf. – 3,008 sf.  
Saleable Area: 2,334 sf.



Leasing Enquiry :

T: +852 2828 7728 / M: +852 9228 2931 (WhatsApp / WeChat)



[signaturehomeshk](https://www.signaturehomeshk.com)



[SignatureHomes\\_HK](https://www.SignatureHomes_HK.com)

[www.signaturehomes.com.hk](https://www.signaturehomes.com.hk)



新鴻基地產  
Sun Hung Kai Properties