



SIGNATURE HOMES  
— RESIDENTIAL LEASING —



## 3 Repulse Bay Road

3 Repulse Bay Road, Repulse Bay, Island South, Hong Kong

Occupying a privileged position overlooking Deep Water Bay, and located on top of Repulse Bay Road, these 4-bedroom apartments are truly breathtaking.

- ◆ Prime south side location but only a short commute to Causeway Bay or Central
- ◆ Calming green environment and Victoria Harbour view penetrate through the expansive windows
- ◆ Within walking distance to Tai Tam Country Park, one of the largest country parks on the island

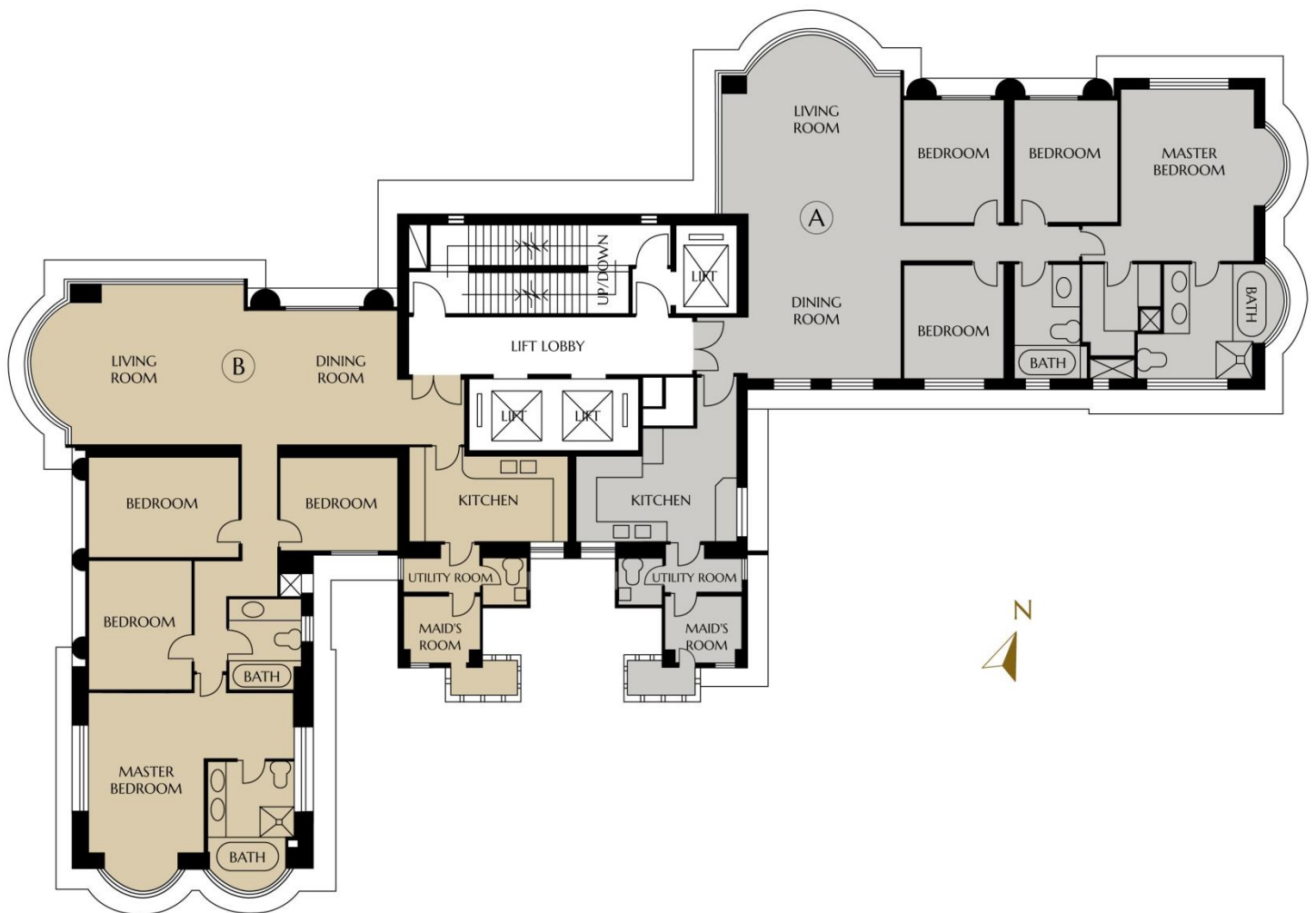


# FEATURES

- ◆ Elongated living and dining room boast spectacular views through the floor-to-ceiling windows
- ◆ Proximity to beaches, golf course, country park and city centre
- ◆ Comprehensive clubhouse with gymnasium, children's playground, outdoor swimming pool, steam and sauna, and billiards/snooker room



# FLOOR PLAN



Gross Area: 2,078 sf. – 2,161 sf.  
Saleable Area: 1,673 sf. – 1,767 sf.



Leasing Enquiries:

T: +852 2828 7728 / M: +852 9228 2931 (WhatsApp / WeChat)



[signaturehomeshk](https://www.signaturehomeshk.com)



[SignatureHomes\\_HK](https://www.SignatureHomes_HK.com)

[www.signaturehomes.com.hk](https://www.signaturehomes.com.hk)



新鴻基地產  
Sun Hung Kai Properties