



SIGNATURE HOMES
— RESIDENTIAL LEASING —



63 Deep Water Bay Road

63 Deep Water Bay Road, Deep Water Bay, Island South, Hong Kong

Meticulously designed and constructed to an exceptionally high standard, these deluxe three-storey houses come with private terraces and roof tops, connecting to green and calm environment.

- ◆ Surrounded by greenery and tranquility, immersing in the natural environment and fresh air
 - ◆ The area features undulating views of Hong Kong Golf Club and the South China Sea
- ◆ Located in prestigious and serene setting of Deep Water Bay yet with easy access to recreational offerings at Repulse Bay and Stanley

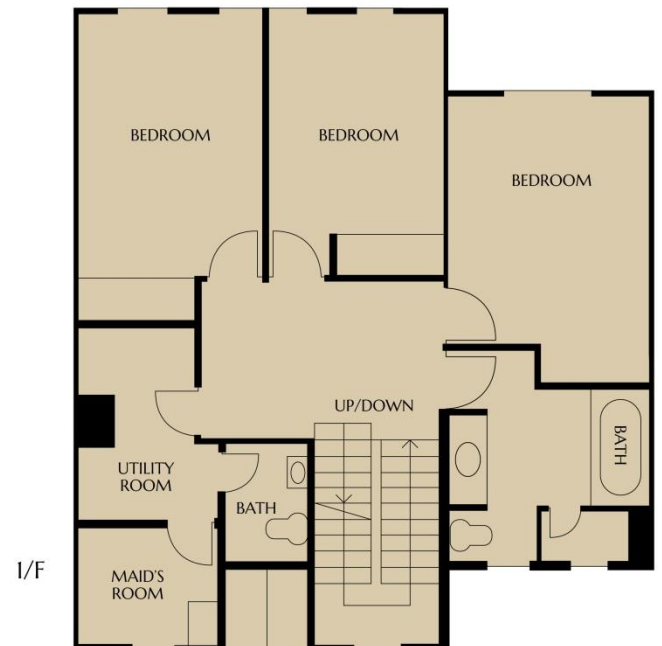


FEATURES

- ◆ Family-friendly community with high security and privacy
- ◆ Comprehensive clubhouse provides heated outdoor swimming pool, well-equipped gymnasium, squash court, landscaped gardens, children's playground and multi-purpose function hall
- ◆ Two covered parking spaces included



FLOOR PLAN



Gross Area: 3,362 sf. – 3,497 sf.
Saleable Area: 2,727 sf. – 2,838 sf.



Leasing Enquiry :

T: +852 2828 7728 / M: +852 9228 2931 (WhatsApp / WeChat)



signaturehomeshk



SignatureHomes_HK

www.signaturehomes.com.hk

