



SIGNATURE HOMES
— RESIDENTIAL LEASING —

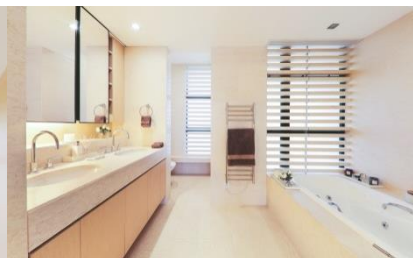


🏠 51 & 55 Deep Water Bay Road

51 & 55 Deep Water Bay Road, Deep Water Bay, Island South, Hong Kong

Stunning and impressive architecture, a coveted location and breathtaking scenery over Deep Water Bay set these three-storey houses apart, each with private roof top and terrace.

- ◆ Situated at the top of Deep Water Bay Road in a serene and exclusive location
 - ◆ Lush greenery surroundings create a tranquil environment to live
- ◆ In close proximity to international schools on the island, Central Business District and recreation offerings in Repulse Bay and Stanley

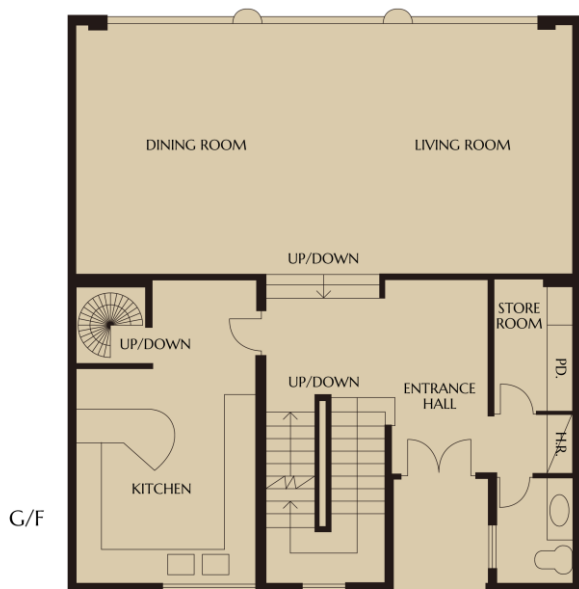


FEATURES

- ◆ Spacious master bedroom with an ensuite bathroom and walk-in closet
- ◆ Prestigious south side location yet only a short drive to city centre
- ◆ Family-friendly community with solid security and high privacy
- ◆ Luxury clubhouse provides recreational facilities such as outdoor pool and well-equipped gymnasium



FLOOR PLAN



4 Gross Area: 3,713 sf. – 4,064 sf.
Saleable Area: 3,498 sf. – 3,821 sf.



Leasing & other Enquiries :

+852 2828 7728 / +852 9228 2931 (Mobile / WhatsApp / WeChat)

signaturehomeshk SignatureHomes_HK www.signaturehomes.com.hk

The particulars, photos, perspectives, design, finishes and materials, layout size of any part(s) in the brochure are for reference only. No representation made or responsibility accepted for the accuracy of the whole or any part(s). All plans and finishes contained are subject to alterations without prior notice. Please contact us for more information. Licence No. C-073185



新鴻基地產
Sun Hung Kai Properties