



SIGNATURE HOMES
— RESIDENTIAL LEASING —

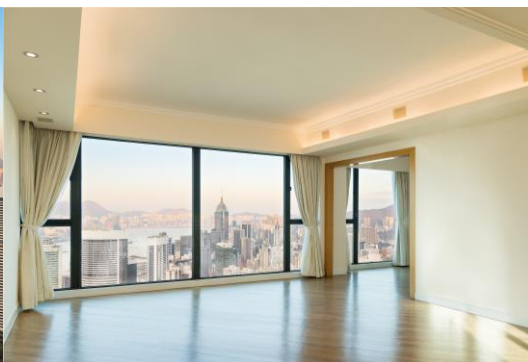


The Harbourview

11 Magazine Gap Road, Mid-Levels, Hong Kong

A monument to style and elegance, The Harbourview offers an elevated standard of living, overlooking one of the world's most exciting cities.

- ◆ Prime Situated in Hong Kong's prestigious Mid-Levels area and it is easily accessible to the shopping and business areas of Central, Wan Chai and Causeway Bay
- ◆ Along the front of the apartment, floor-to-ceiling windows offering plenty of natural light and stunning panoramic views of Victoria Harbour and the city

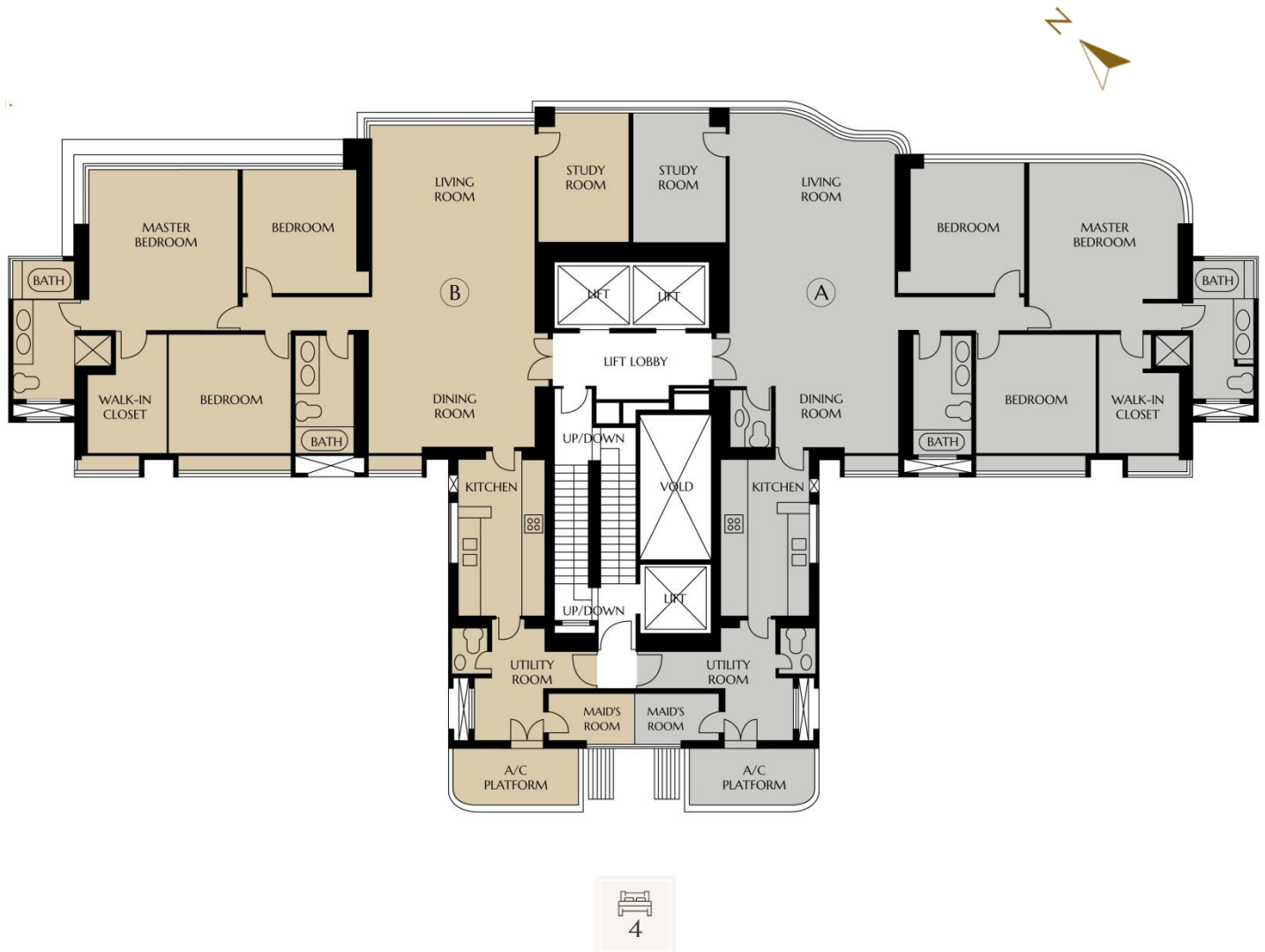


FEATURES

- ◆ All units are finished with 4 bedrooms, the master having a walk-in closet, modern kitchen, and covered parking space
- ◆ The block is well-maintained to a high standard, 16,000 sf. clubhouse facilities include an outdoor swimming pool, sauna, squash court, gymnasium and banquet hall
- ◆ Shuttle bus services with easy access to Central and Admiralty



FLOOR PLAN



Gross Area: 2,340 sf. – 2,350 sf.
 Saleable Area: 2,028 sf. – 2,038 sf.



Leasing & other Enquiries :
 +852 2828 7728 / +852 9228 2931 (Mobile / WhatsApp / WeChat)

signaturehomeshk | SignatureHomes_HK | www.signaturehomes.com.hk

The particulars, photos, perspectives, design, finishes and materials, layout size of any part(s) in the brochure are for reference only. No representation made or responsibility accepted for the accuracy of the whole or any part(s). All plans and finishes contained are subject to alterations without prior notice. Please contact us for more information. Licence No. C-073185