



SIGNATURE HOMES
— RESIDENTIAL LEASING —

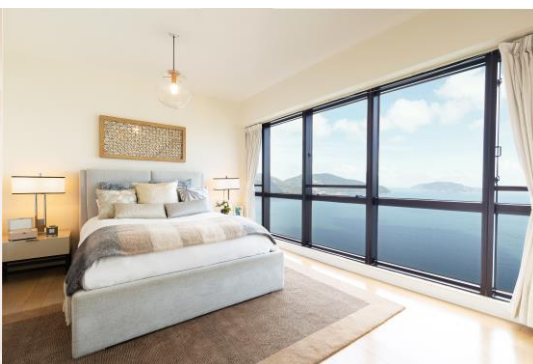
Short Lets Welcome · Furnished Option Available

Pacific View

38 Tai Tam Road, Tai Tam, Island South, Hong Kong

Located next door to the prestigious American Club at the Island South. Pacific View represents affluence, privacy and serenity

- ◆ Floor-to-ceiling windows showing the breathtaking seaview of Tai Tam and the South China Sea
 - ◆ Easy access to shops, restaurants and recreational facilities at Stanley and Repulse Bay
- ◆ Shuttle bus services to Stanley plaza, Ocean Park MTR station and Wan Chai/Admiralty/Central Business District
 - ◆ Fantastic complex with comprehensive facilities
- ◆ Short lets welcome. Flexible leases from 1 month up with furnished or unfurnished residences

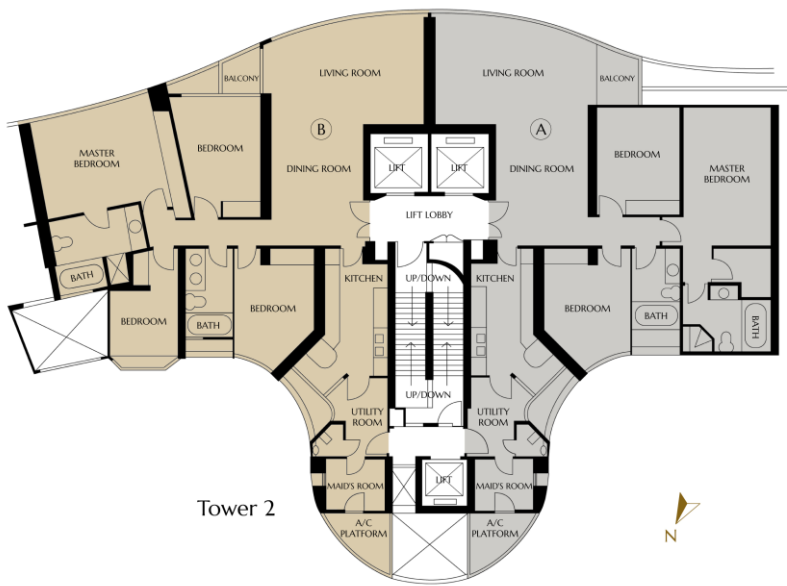


FEATURES

- ◆ A 30,000 sf. clubhouse with indoor and outdoor swimming pools, gymnasium, squash court, tennis court, billiards room, aerobics room, lounge and restaurant, offering residents a full range of recreational facilities
- ◆ Modern and stylish kitchen with well-equipped appliances
- ◆ Upgraded bathroom with high-quality sanitary ware



FLOOR PLAN

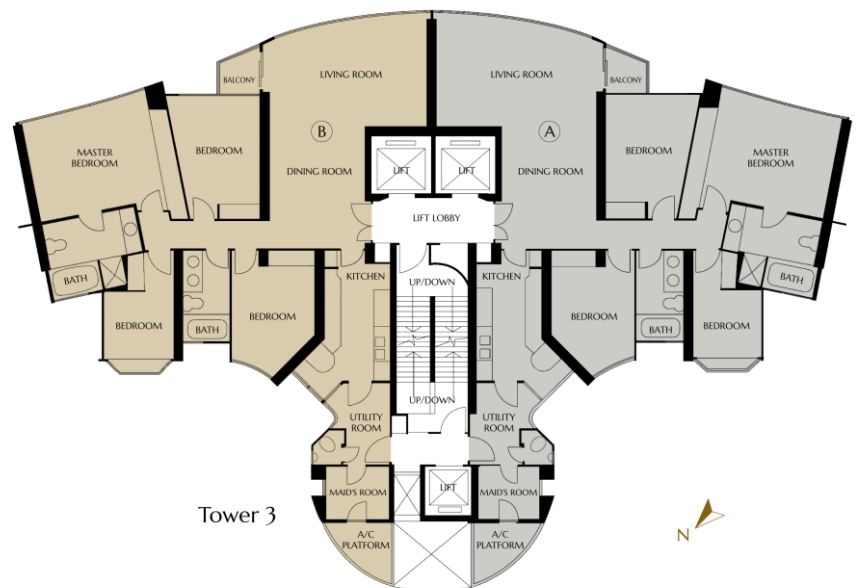


Gross Area: 1,906 sf.
Saleable Area: 1,534 sf.



Gross Area: 2,054 sf.
Saleable Area: 1,674 sf.

Tower 2



Gross Area: 2,054 sf.
Saleable Area: 1,674 sf.

Tower 3



Leasing & other Enquiries :

+852 2828 7728 / +852 9228 2931 (Mobile / WhatsApp / WeChat)

signaturehomeshk | SignatureHomes_HK | www.signaturehomes.com.hk

The particulars, photos, perspectives, design, finishes and materials, layout size of any part(s) in the brochure are for reference only. No representation made or responsibility accepted for the accuracy of the whole or any part(s). All plans and finishes contained are subject to alterations without prior notice. Please contact us for more information. Licence No. C-073185